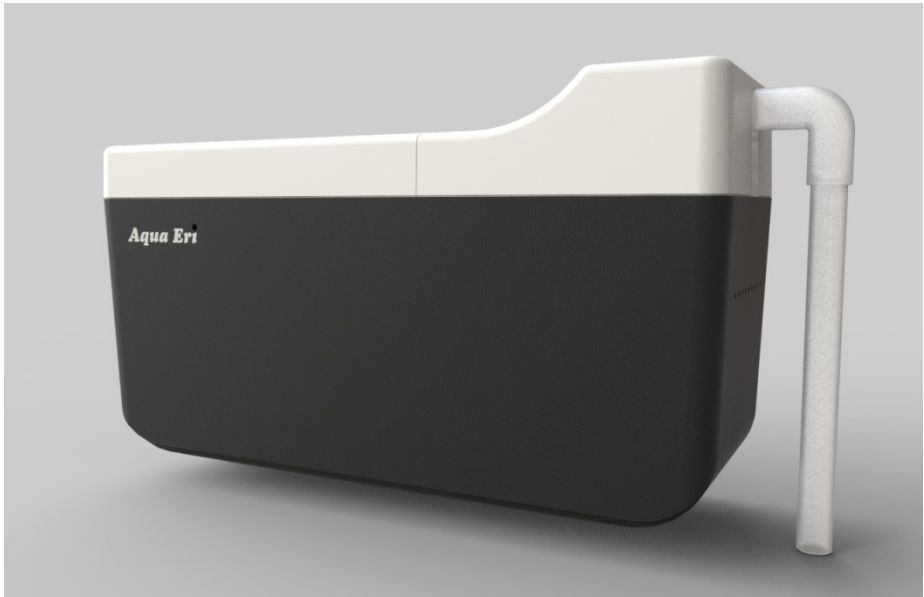


AQUA Eri

產品手冊與保證書
Instruction for Use & Warranty



ECO Zero

客戶服務

誠摯感謝您購買 Aqua 系列產品。

您的 Aqua 系列產品將自您購買日當天起，享有 2 年有限保固，詳細規範於保固書中說明。如果您對於 Aqua 系列產品有任何問題，請與我們聯繫（+886-3-666-1993），並提供您的產品序號與購買時間、地點；或者您也可以造訪 www.the-ecozero.com 查詢線上協助與 Q&A。

重要安全事項

1. 第一次使用前，請詳閱此說明書內容，以避免不當使用或傷害。
2. 拆箱後，請先確認產品外觀及零件是否有任何損傷，若有發現損傷，請勿使用並與我們聯繫。
3. 拆封後的包材（紙板、塑膠袋等）請放在孩童拿不到的地方，以免發生窒息或是受傷的危險。
4. 請勿將 Aqua 系列產品靠近火源或是任何加熱產品的上方或是附近，以免變形或燃燒。
5. 請勿讓孩童操作 Aqua 系列產品，以免不當問題發生。
6. 當使用或是清潔 Aqua 系列產品時，若週遭有孩童或是不熟悉 Aqua 系列產品操作的使用者，請特別注意他們的安全。
7. Aqua 系列產品不宜劇烈碰撞，不可倒置或劇烈搖晃，避免造成零件損壞。

注意：Aqua 系列產品內含紫外燈管，避免在開放狀態下開啓電源，若長時間照射人體，可能會導致皮膚或眼睛的傷害。

注意：清潔時，請使用軟布及溫和清潔劑，勿使用強鹼性清潔劑，以免造成商品受損。

8. 禁止使用潮濕的手觸碰或淋水於電線及插頭。從插座拔下插頭時，應抓住插頭而非電線。並請定期以乾布清潔電源插頭上的積塵，避免漏電。
9. 不使用、裝卸零件前或定期清潔時，請務必先從插座拔下插頭。
10. Aqua 系列產品含有電氣零件，勿將主機完全浸入水中。
11. 電源線或是插頭損壞、設備故障或受損時，請關閉電源並與我們聯繫。
12. 若因人為疏失或不當使用而造成損傷，恕不負任何責任。

ECO Zero

產品各部位說明



- | | |
|--------------------------|-----------------------|
| a. 過濾蓋 | g. 10片 Aqua Eri 過濾加強片 |
| b. 溢水偵測 | h. 3分*進水直管（長） |
| c. 紫外燈座蓋 | i. 還原槽 |
| d. 進水彎管 | j. 過濾器支架 |
| e. 紫外燈管 | k. 電源供應器 |
| f. 物理過濾系統（含 Aqua Eri 濾芯） | l. 3分*出水直管（短） |

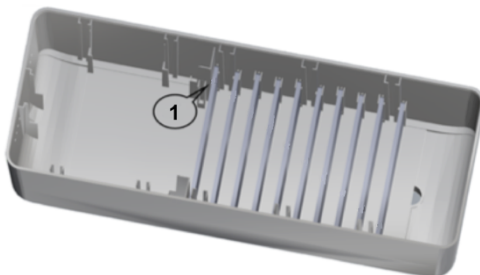
*備註：三分管為外直徑 18 公釐之透明 PVC 管

產品安裝

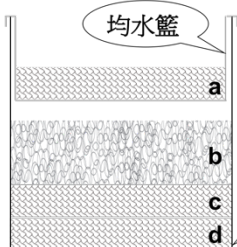
1. 將 3 分出水直管（短）安裝於還原槽出水口。
注意：3 分出水直管（短）一端須沒入水面下方。

ECO Zero

2. 10 片 Aqua Eri 過濾加強片按照右上角的數字標記，從靠近物理過濾系統處開始，以從 1 到 10 的順序擺放入還原槽的插槽中。



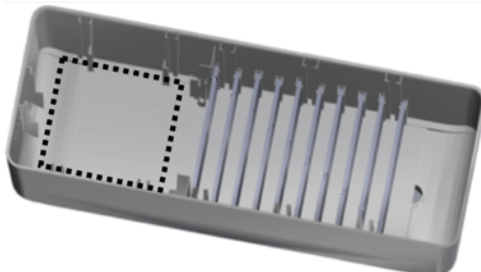
3. 濾芯共 5 層，如下圖所示。放入時，請依序放入物理過濾系統中並確保濾芯皆完整覆蓋平面，避免物理過濾系統效率降低。



濾芯層說明

- a 羊毛絨與均水籃
- b 白棉
- c 羊毛絨
- d 羊毛絨
- e ECO Zero獨家配方濾芯

4. 取出 ECO Zero 獨家配方濾芯，用清水搓揉清洗至洗滌水成接近無色或無色（剛開始呈灰黑色）後，將 ECO Zero 獨家配方濾芯放至物理過濾系統下方，如下圖虛線所標示的位置。



5. 放置均水籃前，請先將 Aqua Eri 濾芯 a 完整覆蓋均水籃。均水籃架於物理過濾系統上方，請調整均水籃位置使得過濾蓋可以完全密合。

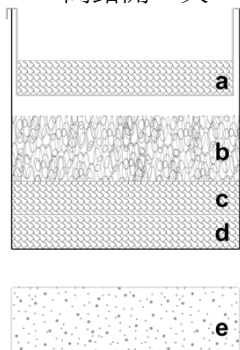
ECO Zero

6. 安裝進水彎管至還原槽短邊壁上端的插槽中（靠近物理過濾系統）。再將 3 分進水直管（長）一端銜接於馬達上，另一端與進水彎管相接。
7. 打開紫外燈座蓋，插裝紫外燈管於紫外燈座蓋之插座。完成後，請先將紫外燈座蓋完整密合於還原槽上，然後蓋上過濾蓋。
8. 拉開過濾器支架至合適的長度，讓過濾器支架兩端可穩固的卡在魚缸上。將 Aqua Eri 穩固的安裝至過濾支架上。
注意：Aqua Eri 安裝完成後，應呈現水平狀態，不會有任何傾斜。
9. 接上電源供應器，確認電源為關閉狀態，再將電源供應器插入插座中。請務必使用交流電 110V 的獨立插座。並請注意於使用時，電源線沒有與其他電器商品或其電源線有所纏繞。

清潔與保養

1. Aqua Eri 濾芯清潔與更換

- (1) 清洗與更換頻率須視實際需求進行調整，五層 Aqua Eri 濾芯的清洗與更換頻率建議如下圖所示。
- (2) Aqua Eri 濾芯 a、c、d 為專屬羊毛絨，過薄或無法完整覆蓋均水籃或是物理過濾系統時，請務必更換。
- (3) Aqua Eri 濾芯 e，請務必兩個月更換一次。
- (4) 請避免同時清洗或更換 Aqua Eri 濾芯 a 與 b，衝突時，請將時間錯開一天。
- (5) 請避免同時清洗或更換 Aqua Eri 濾芯 c 與 d，衝突時，請將時間錯開一天。



濾芯層	維護方式
a	積水發生時清洗
b	一週清洗一次
c	一月清洗一次
d	一月清洗一次
e	一月清洗一次

2. Aqua Eri 過濾加強片清潔

ECO Zero

- (1) 清潔頻率為每 1 ~ 2 年清潔一次。
- (2) 使用軟布配合清水進行清潔。請勿使用含強酸強鹼腐蝕效果的溶液進行清潔。

注意：清潔前務必先關閉電源。

疑難排解

如果您在使用 Aqua 系列產品時發生任何問題，請先行檢查下列項目。如果問題仍未解決，請與我們聯繫，並提供您的產品序號與購買時間、地點。或者您也可以造訪 www.the-ecozero.com 查詢線上協助與 Q&A。

1. 紫外燈不亮
 - (1) 請確定 Aqua 系列產品的電源插頭已妥善連接
 - (2) 請確定電源供應器正常供電
 - (3) 請確定紫外燈座是乾燥的
 - (4) 請嘗試更換紫外燈管
2. 溢水偵測有積水
 - (1) 確認 3 分出水直管（短）有正確安裝
 - (2) 更換 Aqua Eri 濾芯
3. 沒有進水
 - (1) 檢查馬達是否正常運作
 - (2) 檢查 3 分進水直管（長）、進水彎管是否堵塞

技術規格

額定電壓	115 V/60 Hz
消耗功率	13 W
電線長度	150 公分
產品重量	5 公斤
產品尺寸 (長 x 寬 x 高)	42 x 15 x 21 公分
燈管型號	TUV PL-S 13W 2P 1CT

ECO Zero

Customer Care

THANK YOU FOR CHOOSING TO BUY Aqua SERIES APPLIANCE. Your Aqua series appliance will be covered from the date of purchase, subject to the terms of the warranty. If you have any questions about your Aqua series appliance, call the Helpline, +886-3-666-1993, with your serial number and details of where/when you bought the appliance. Alternatively, visit www.the-ecozero.com for online help and Q&A.

Important Safety Instruction

- 1.** Please read all the information before using your Aqua series appliance for the first time. Failure to adhere to the instructions and safety information may lead to hazardous conditions.
- 2.** After unpacking your Aqua series appliance, please check if there are any damages. If you find any damages, do not use it and call the Helpline.
- 3.** Keep the packaging material (cardboard, plastic bag, etc.) out of reach of children in order to avoid risks of suffocation or injury.
- 4.** Do not place your Aqua series appliance on or in close proximity to any heating devices such as hot gas, switched-on electric hobs, etc.
- 5.** The manufacturer shall not be responsible for damage or injuries that arise as a result of misuse or unintended use. Use your Aqua series appliance exclusively for the purpose intended.
- 6.** Do not allow children to play with your Aqua series appliance.
- 7.** When using or cleaning your Aqua series appliance in close proximity to children or persons who are unfamiliar with it, ensure close supervision at all times.

ECO Zero

- 8.** Do not shake your Aqua series appliance containing fragile parts in order to avoid damages or injury.
CAUTION: Your Aqua series appliance contains one UV light tube and must not be switched on without the Anti-UV light lid properly placed. Exposure to UV light might cause eye and skin injuries.
CAUTION: To prevent damage to your Aqua series appliance do not use alkaline cleaning agents. When cleaning, use a soft cloth and a mild detergent.
- 9.** Do not touch the power supply cord or the plug with wet hands. Always apply the force to the plug rather than the cord when unplugging your Aqua series appliance.
- 10.** Unplug your Aqua series appliance when not in use, before cleaning, before putting on or taking off parts, and before moving it.
- 11.** Remember: Never immerse your Aqua series appliance in water since it contains an electrical part.
- 12.** Never put your Aqua series appliance into operation if the power cord or plug is damaged, or your Aqua series appliance malfunctions or has been damaged in any way. Call the Helpline to consult about your Aqua series appliance repair.

ECO Zero

Description of Appliance



- | | |
|--|--|
| a. Mechanical filtration lid | g. Aqua Eri filtration panels(10 pieces) |
| b. Overflow indicator | h. Long I-shaped tube* |
| c. Anti-UV light lid | i. Reduction vessel |
| d. L-shaped tube | j. Rack |
| e. UV light tube | k. Power supply |
| f. Mechanical filtration system (with Aqua Eri filter) | l. Short I-shaped tube* |

*Note: Tube applied here is transparent with outer diameter of 18mm.

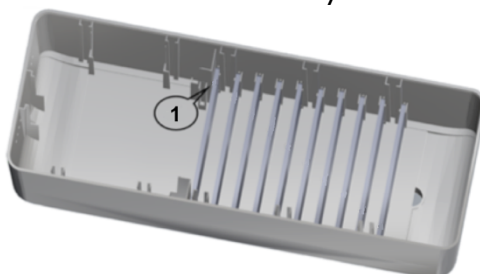
ECO Zero

Prior to Use Aqua Series Appliance

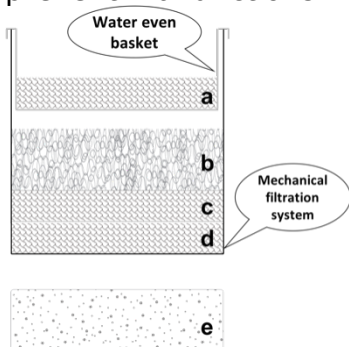
1. Install one end of the Short I-shaped tube at the outlet of the Reduction vessel.

CAUTION: When in usage, the open end of the Short I-shaped tube should be placed in water to reduce noise.

2. Every Aqua Eri filtration panel has a number mark at the upper right. Insert the Aqua Eri filtration panels into the Reduction vessel by ascending order starting from the Mechanical filtration system side.



3. The Aqua Eri filter is constructed by five different layers as illustrated in the following figure. Arrange those layers according to the order and place each layer evenly to prevent malfunctions.

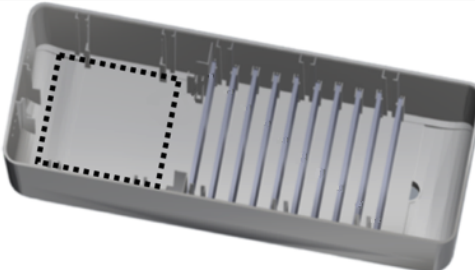


Aqua Eri Filter Layers

- a Filter wool with water even basket
- b Filter pad
- c Filter wool
- d Filter wool
- e ECO Zero exclusive formula filter

4. Remove the ECO Zero exclusive formula filter from packaging and rinse it thoroughly with tap water until no visible particles are washed out. Put the ECO Zero exclusive formula filter under the Mechanical filtration system as illustrated in the following figure.

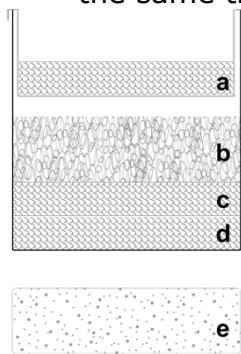
ECO Zero



5. Place filter wool to fully cover the water even basket. Adjust the water even basket and let the Mechanical filtration lid be able to cover up.
6. Install the L-shaped tube onto the edge of the Reduction vessel closer to the Mechanical filtration system. Connect one end of the Long I-shaped tube to your water pump and the other end to the L-shaped tube.
7. Take out the UV light tube and plug it into the socket on the Anti-UV light lid. Then, put the Anti-UV light lid and the Mechanical filtration lid back to the Reduction vessel properly.
8. Extend the rack to fit on the top of your tank. Ensure that the rack properly anchors above it. Then, place Aqua Eri onto the rack properly and steadily.
CAUTION: It is required that Aqua Eri is not tilted to the front, back, left or right.
9. Before placing the power supply plug to the socket, ensure the power supply is switched off. Only connect your Aqua series appliance to a professionally grounded socket with an input voltage of 110V. (Use a residual current circuit breaker [RCCB or RCD]). If necessary, ask an electrician for advice. Whilst using your Aqua series appliance, it is necessary that the socket remains easily accessible in case of emergencies. The manufacturer shall not be liable for any accidents that arise due to deficient or defective grounding of your Aqua series appliance.
10. If the socket is not suitable for the plug on your Aqua series appliance, it is required to have the socket replaced by a qualified electrician.

Maintenance and Care

- 1. Aqua Eri Filter Cleaning andReplacement Frequency
 - a. The cleaning and replacement frequency shall be adjusted according to actual condition. Suggested cleaning and replacement frequency of each layer is illustrated in the following figure.
 - b. Aqua Eri filter layer a,c, and d are designed filter wool, replace to a new one when the filter wool is too thin or not able to cover the water even basket or the mechanical filtration system basket evenly.
 - c. Please replace the Aqua Eri filter layer e every 2 months.
 - d. Please avoid to change or clean Aqua Eri filter layer a and b at the same time. To stagger for one day if necessary.
 - e. Pleaseavoid to change Aqua Eri filter layer c and d at the same time. To stagger for one day if necessary.



Layers	Maintenance Frequency
a	Clean when clogging up
b	Clean Every 1 week
c	Clean Every 1 month
d	Clean Every 1 month
e	Clean Every 1 month

- 2. Cleaning Procedure of Aqua Eri Filtration Panels
 - a. It is recommended to cleanAqua Eri filtration panelsonce every 1 ~ 2 years.
 - b. Use a soft cloth slightly moistened with cleaning tap waterand mild detergent for cleaning. Do not use a

ECO Zero

solution containing strong acid, strong alkali or abrasives.

CAUTION: Must switch off the power and make sure that the UV light is off before cleaning. Exposure to UV light might cause eye and skin injuries.

Troubleshooting

If you encounter problems when using your Aqua series appliance, please check the following points before requesting service. If the problem remains unsolved, call the Helpline with your serial number and details of where/when you bought the appliance. Alternatively, visit www.the-ecozero.com for online help and Q&A.

1. The UV light is not activated.
 - a. Ensure that the power supply plug is connected properly.
 - b. Ensure that there is power at the socket.
 - c. Ensure that the UV light base is dry.
 - d. Change a new UV light tube.
2. The Overflow indicator has overflow water.
 - a. Ensure the Short I-shaped tube is installed properly
 - b. Replace the Aqua Eri filter.
3. Water does not flow into your Aqua series appliance.
 - a. Check if your water pump works properly.
 - b. Check if there is any blockage in the tubes and the water entrance of your water pump.

ECO Zero

Technical Data

Rated voltage	115 V/60 Hz
Rated output	13 W
Cord length	150 cm
Product weight	5 Kg
Product dimensions (L x W x H)	42 x 15 x 21 cm
UV light tube model	TUV PL-S 13W 2P 1CT