

Taiwan's exclusive technology

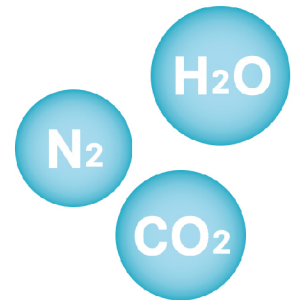
SE+ decomposes toxins and maintains water quality.
It reduces the frequency of regular water changes.
Try it yourself and experience Taiwan's strong technology!



Removes toxic substances from residual bait and excrement.



SE+, a long-acting super-nano material, decomposes toxic substances into the most basic gas molecules and water by using energy from the light.



Gas molecules from decomposition escapes into the air when they are pumped upwards. This provides a sustainably clean living environment for aquatic organisms.

01 > What is Aqua Eri ?

Aqua Eri is the world's first aquarium filter that uses a photocatalyst as the core, featuring an exclusive patented technology.

The photocatalyst uses the energy from light to eliminate dirt, toxins, and other substances, and it also has a strong pathogen inactivation.

Aqua Eri replaces traditional Nitrobacter systems, eliminating the instability came from nitrifying mechanism and allowing you to raise fish in a clean, comfortable, and stable environment.

02 >> Comparisons between Aqua Eri and traditional filters

> No need to cultivate nitrobacter

Aquatic creatures living in a tank continuously discharge metabolites into the water. These metabolites are toxic to them and must be continually removed from the water to remain healthy.

In a traditional aquarium tank, the detoxification process relies mainly on microorganisms called nitrobacter. Nitrobacter not only grows slowly but are also strongly affected by the environment. These bacteria must be cultivated before placing aquatic creatures in a new tank, a process that can take as long as eight weeks.

Aqua Eri detoxifies the tank through its photocatalyst, begins working immediately, and operates 24/7. This provides stable and clean water with no waiting period and without sensitivity to environmental changes like those experienced with nitrobacter.

> No need to implement regular water change

Although nitrobacter assists in the decomposition of toxins in traditional filtration systems, nitrates generated during the detoxification process will accumulate in the water. Because these nitrates are slightly toxic, the water must be changed regularly to maintain levels that will not harm aquatic creatures.

Aqua Eri uses photocatalyst to decompose toxins into nitrogen, water, and carbon dioxide, substances that can escape into the air. No byproducts from detoxification accumulate in the water, so the water in the tank rarely needs regular changing.

> Water remains clear and transparent

Traditional tanks rely on microorganisms to maintain the aquatic environment, but when the microorganisms are in poor condition, the water will appear cloudy, reducing the ornamental value of the tank.

Aqua Eri not only inactivates pathogens but also keeps the water clear and translucent at all times. Having a tank that seems full of air rather than water is no longer a dream.

03-1 > What size aquarium tank is Aqua Eri suitable for?

Aqua Eri is suitable for tanks 1.5-3ft. long and with water volumes between 40 and 200 liters.

If your tank exceeds this water volume, multiple Aqua Eris can be used simultaneously. Alternatively, you can contact our personnel to provide customized services for your tank.

03-2 > What additional devices are needed after the purchase of Aqua Eri?

> Aquarium Pump

Aqua Eri does not have a built-in pump, so you will need to choose a suitable submersible or immersible pump according to the size of the aquarium tank.

Aquarium tank height	Submersible motor	Immersible motor
36cm	800~1,500L/H	18~25L/min
60cm	1,800~2,500L/H	35~38L/min

> Air Pump

Sufficient pumping not only assists the photocatalyst in decomposing toxins and organic matter but also creates a bottom-up water flow in the tank to increase the integrity of the water flow make the Aqua Eri function more efficiently. It is, therefore, strongly recommended that you choose a suitable air pump according to the size of the fish tank and use it along with Aqua Eri.

Can you provide previous customers' usage records for reference?

1. 部落客-漢寶哥的水族生活網
http://www.the-ecozero.com/docs/feedback_01.pdf
2. MOBILE 01 (極道狐狸)
http://www.the-ecozero.com/docs/feedback_02.pdf
3. 部落客-千千小芋頭
http://www.the-ecozero.com/docs/feedback_03.pdf
4. 部落客-藍色胖海象
http://www.the-ecozero.com/docs/feedback_04.pdf
5. MOBILE 01 (SOSOYY)
http://www.the-ecozero.com/docs/feedback_05.pdf
6. PH8.4 (nikee)
http://www.the-ecozero.com/docs/feedback_06.pdf
7. 部落客-藍星沙
http://www.the-ecozero.com/docs/feedback_07.pdf
8. Facebook Feedback
http://www.the-ecozero.com/docs/feedback_00.pdf

05-1 >> Can Aqua Eri be used with traditional filters?

This is not recommended, because the strong decomposition and inactivation functions of Aqua Eri will conflict with the large number of bacteria in an existing filtration system. This will not only undermine the efficiency of Aqua Eri but will also inactivate the bacteria in the existing filtration system and thus harm the organisms in the tank.

05-2 >> Can Aqua Eri be used in tanks with saltwater tanks or tanks with aquatic plants?

Yes! Aqua Eri is suitable for tanks with aquatic plants, tanks with sinking wood, fish-only saltwater tanks, or saltwater tanks for corals and anemones.

05-3 >> What are the advantages of using Aqua Eri to grow aquatic plants?

>> It inhibits the growth of lower-grade algae

Aqua Eri can inactivate lower-grade algae, effectively reducing the competition between algae and aquatic plants, and lowering the need for introducing algae-eating organisms.

>> It reduces the amount of CO₂ used

When Aqua Eri decomposes organic matter, CO₂ is released, thus reducing the amount of CO₂ that must be introduced into the tank when growing aquatic plants.

05-4 >> **What are the advantages of using Aqua Eri to raise corals and anemones?**

> **Clean water**

In the marine coral reef environment, most of the bacteria exist on the surface of the reef, with very little bacteria contained in the seawater. This makes the seawater in the coral reef area look very transparent and clean. Aqua Eri can keep the number of microbes at a stably low value to provide corals and anemones with growth environments closer to those found in nature.

> **It allows for using large amounts of feed**

Aqua Eri has high decomposition efficiency and strong pathogen inactivation, so putting in large amounts of feed will not lead to excessive nutrients in the water or to bacterial growth.

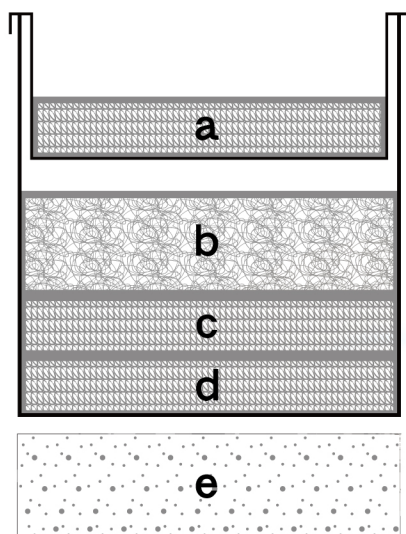
> **It eliminates the need for a protein skimmer**

Aqua Eri removes proteins by directly decomposing them into water, carbon dioxide, and nitrogen. This eliminates the need for a protein skimmer, thus reducing costs.

05-5 >> Cleaning and maintenance of the Aqua Eri filter element

Recommendations for cleaning and replacement of the Aqua Eri filter element' s five layers are as follows:

- > The cleaning and replacement frequency shall be adjusted according to actual condition. Suggested cleaning and replacement frequency of each layer is illustrated in the following figure.
- > Aqua Eri filter layer a, c, and d are designed filter wool, replace to a new one when the filter wool is too thin or not able to cover the water even basket or the mechanical filtration system basket evenly.
- > Please replace the Aqua Eri filter layer e every 2 months. Please avoid to change or clean Aqua Eri filter layer a and b at the same time. To stagger for one day if necessary.
- > Please avoid to change Aqua Eri filter layer c and d at the same time. To stagger for one day if necessary.



Filter element layer	Name	Maintenance frequency
a	Filter wool with water even basket	Clean when clogging up
b	Filter pad	Change every 1 week
c	Filter wool	Clean every 1 month
d	Filter wool	Clean every 1 month
e	ECO Zero exclusive formula filter	Clean every 1 month

05-6 ➤ **Cleaning of the enhanced Aqua Eri filtration panels**

- It is recommended to clean Aqua Eri filtration panels once every 1~2 years.
- Use a soft cloth slightly moistened with cleaning tap water and mild detergent for cleaning. Do not use a solution containing strong acid, strong alkali or abrasives.

05-7 ➤ **How long does the UVC tube need to be turned on each day?**

It is recommended that the UVC tube operate constantly, 24 hours per day. The power should only be turned off when replacing the tube or opening the Anti-UV light lid.

05-8 ➤ **How often should the UVC tube be replaced?**

Under normal conditions, the UVC tube should be replaced every six months. Be sure to turn off the power before replacing the tube.

06 ➤

Rated voltage	115 V/60 Hz
Rated Output	13 W
Cord length	150CM
Product weight	5KG
Product dimensions(L x W x H)	42 x 15 x 21 CM
UV light tube model	TUV PL-S 13W 2P 1CT
Size of long I-shaped tube and short I-shaped tube	Inner diameter:16mm outer diameter:18mm
Size of L-shaped tube	Inner diameter:18mm outer diameter: 22mm



極道狐狸 (/userinfo.p

160分

樓主



相信有在接觸水族的魚友應該都有聽過一句話 "養魚就是養水"，我自己接觸水族也有一段時間，一開始也是朋友推坑送了我一個子彈缸然後跑去買一個外掛過濾跟幾隻紅蓮燈，果然應驗一句話 "你終究會擴缸，何不一開始就擴好擴滿"（好吧！！這是我自己亂說的 XD!!）

一路擴到三呎缸就開始瘋七彩神仙！！那時真的覺得這魚好漂亮啊🐡 跟著朋友四處逛水族館，但因為畢業沒多久銀彈不足也都只能看看而已，那時後豹紋豹蛇剛開始流行，狠下心跟朋友一人買一隻三吋豹蛇來養，結果當然是打水漂了🐡，到現在還記得一隻1800對剛畢業的小伙子來說真的好心痛啊！！現在想想那時還真是大膽啊，當時沒有任何設備，冬天換水

都要開熱水器調水到桶子，再一桶一桶的到到魚缸中，只能說滿頭熱血但都在做白工🤖



養不順的時候，剛好看到海水缸（當時整個驚為天人）結果棄淡水轉海水，當然也是走了很多冤枉路跟繳了很多學費，但還是養不好，一開始也是活石開缸養水，經歷爆藻 NO2 NO3 等到歸零後才開始進魚，那時候也是海水論壇狂爬，水街幾乎一個禮拜去三次以上，小丑地毯就不用說了，剛入坑一定會買，但結果也是打水漂啊啊啊！！

灰心之下我就沒在養魚很長一段時間，但後來還是沒法抗拒水族的世界，又回到七彩的懷抱，直接改用系統缸飼養至今(真的很方便管理)，我不敢說養得多好，但至少也已踏上繁殖之路～～



最近在FB有看到朋友分享一款台灣自行開發設計與在台灣製造的過濾器(MIT)"[Aqua Eri 免換水過濾系統](http://www.the-ecozero.com) (/externallink.php?url=http%3A%2F%2Fwww.the-ecozero.com%2F)"，因養魚換水是很平常的事情，如果真的能夠簡化飼養的方式，變得更方便更好管理，相信是每個愛養魚的人都非常樂見的，好奇之下點進去看了一下介紹，沒多久他就出現在我的面前！！



第一眼就讓我聯想到APPLE



開箱的第一印象～質感🐸100！！



至於怎麼安裝，大家可先看過下列官方影片會更加的清楚，看過後相信會很快上手

Aqua Eri 組裝影片



與傳統的過濾器比較下Aqua Eri一體成型，看粉絲團為了整體造型搭配還特別去設計開模，拿到實品後質感果然完全不一樣，表面是霧面黑上摸起來有些阻力，具有防滑的功能，特別的是揚水馬達接口有專門設計了入水口搭配，與一般傳統過上部過濾完全要靠自己裁切管子長度，導致運作時會有共振聲甚至上蓋會無法密合，完全看得出來設計者的用心。



一般上部過濾與Aqua Eri免換水過濾系統比較，可以看到左邊的一般上部過濾出水口有點卡，我其實已經裁切好多次了ORZ...

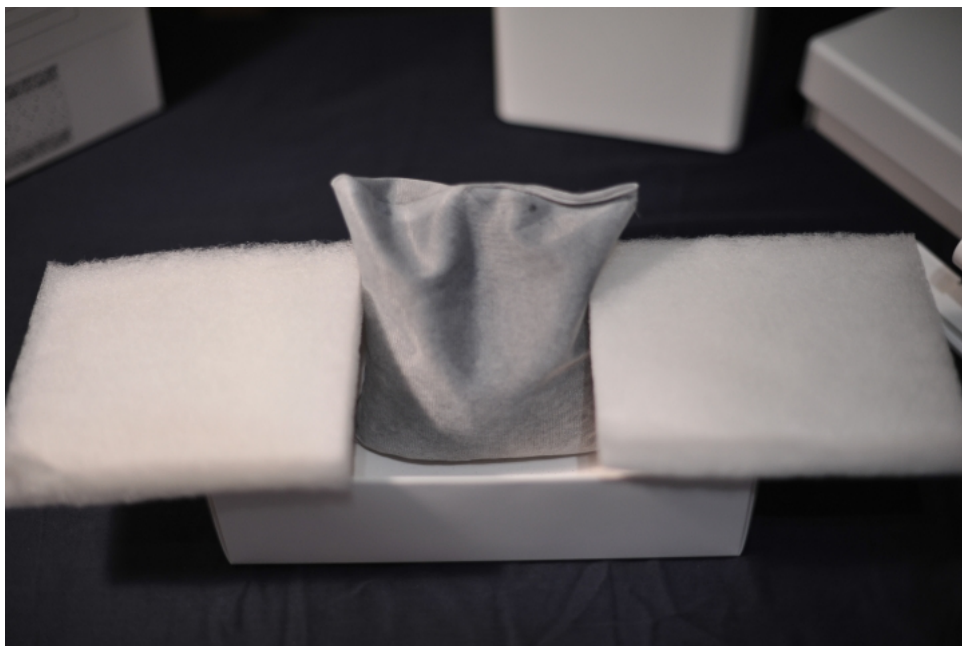


紫外線燈與物理過濾濾材

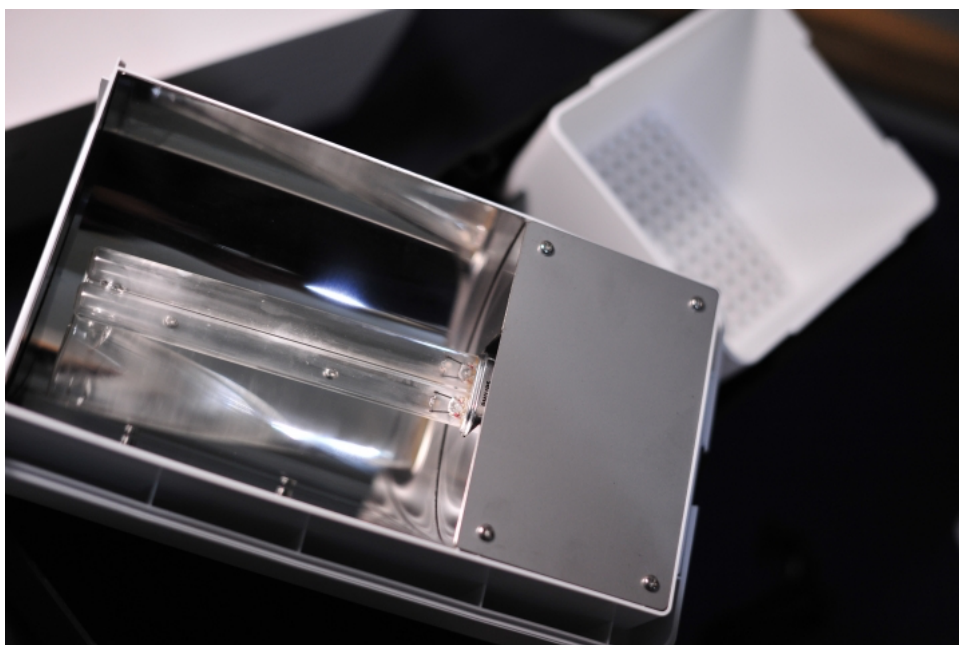




這邊不得不說那包濾材，外層的布摸起來非常滑順，內部目前能知道的是有活性碳，有試著抖動這包濾材，發現居然沒有太多粉塵掉出來，不然一般外面買活性碳濾材，拿出來滿手都會黑黑的，活性碳的細粉狂掉。



紫外線殺菌燈一併整合在上蓋中。



另外要提一下，這個蓋子也是有玄機的，當白棉髒掉後，水位會上升到ECO Zero的字體上面，看到字體中有水就知道需要更換白棉了，不需要特別開蓋檢查，這點算是蠻貼心的設計。



揚馬抽水後，水會先進入物理過濾系統，內部配置是 白棉-Aqua Eri專用濾心-白棉



還原槽的設計讓個人感覺像底濾的過濾方式，將Aqua Eri過濾加強片插入還原槽中的凹槽，完成後看起來是一高一低的排列方式。

輕鬆養魚真的那麼容易 !? ECO Zero過濾器初次體驗測試!! (進行中)

24

收藏

|

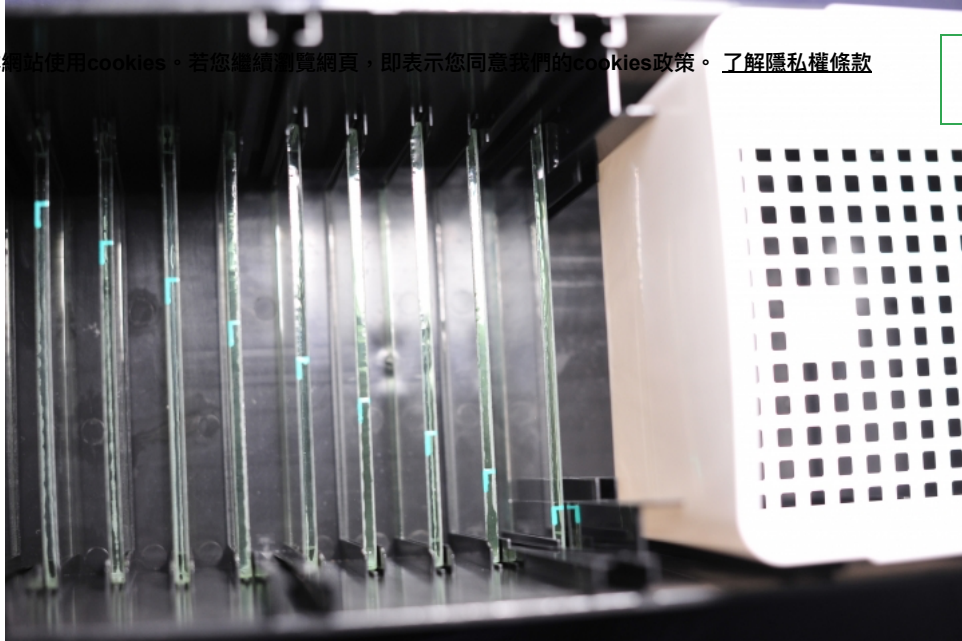


經過第一層物理過濾後水會進入還原槽，這時水會經過紫外線燈照射並流過Aqua Eri過濾加強片，有特別問過ECO Zero粉絲團，這些過濾加強片都是有水流力學的原理的存在，所以不用怕淹上去，紫外線燈與水有一定的距離，也不用怕會造成燈的損害。



為提供更優質的服務，本網站使用cookies。若您繼續瀏覽網頁，即表示您同意我們的cookies政策。[了解隱私權條款 \(privacy.php\)](#)

我知道了！請關閉提示



一般傳統過濾方式是透過揚水馬達抽水，經過白棉-濾材-出水



兩者就外觀來說我想Aqua Eri應該是穩贏的 🐸 100



Aqua Eri與一般傳統過濾外觀比較整理

Aqua Eri 免換水過濾系統	一般傳統過濾系統
透過設計開模，外觀一體成型，濾材更換容易，空間利用佳，不佔魚缸空間。	設備多樣，且未整合。 上部過濾安裝不好容易有異音。 底濾系統容易有潮濕發霉等狀況，且清洗不易。 背濾系統除清洗不易外，又佔魚缸空間。

Aqua Eri 免換水過濾系統基本資訊

長 X 寬 X 高：42CM X 15CM X 21CM

重量：5公斤

建議馬達流速：每分鐘18-30公升

建議原缸尺寸：2-3台尺

建議水量：200公升以下

製造地：台灣

適用水質：淡/海水皆適用

Aqua 系列產品真的可以不用換水？是用什麼原理不用換水？

官網中的常見問題說明如下：

ECO Zero 致力於對地球環境有所貢獻，有鑑於市面上魚缸產品皆須定期換水而造成大量的水資源浪費，特與國際知名教授合作，花費十五年的研究，開發出專利級奈米材料、長效型生態玻璃、耐久型高分子複合型材料等等。

本公司設計團隊成功的結合上述材料，設計出簡約時尚、功能性強大之 Aqua 系列產品，達到不需換水的不可思議任務。有別於傳統魚缸系統必須要換水以降低水中生物排泄、分泌等所產生之有毒物質，Aqua 系列產品集眾多功能為一體，透過紫外線光將有毒物質分解，配合耐久型高分子複合型過濾裝置，使魚缸永保清澈，達到淨水還原，「零」毒、「零」臭、水資源「零」浪費。

我打算用傳統過濾與Aqua Eri 免換水過濾系統這兩組系統來測試，試試看Aqua Eri 免換水過濾系統是不是真的這麼厲害！！

因手邊剛好有多的繁殖缸(1.5呎立方)，目前設定分別使用一般上部過濾與Aqua Eri同時飼養，測試魚隻為金魚，試試看吃多拉多的金魚是不是真的能不用換水來養殖，一般上部過濾是否也能有同樣的效果？

測試時間會以一個月為基礎，到時會將魚缸狀況一併更新上來～～🐸 100

其實我還蠻想測試海水，只是海水魚要找到穩定的真的不容易找到，待淡水測試完成後，有機會再來試試看海水～～

當然試驗當中魚出問題會馬上終止測試，會先治療。